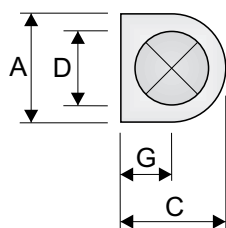


Product information THKN

www.netologen.se
version : 2005-1

Type and use :

Semi-circular complete low impulse unit for clean room installation, 4 environmental classes



Dimensions & weight

THKN	A	C	D	E	G	H	Kg
20	300	300	199	0-800	125	2000	30
25	350	350	249	0-800	150	2000	38
31	500	500	314	0-800	235	2000	48
40	630	630	399	0-800	290	2000	58

Cleaning

Open the unit by loosening the screws in the front. The inside of the unit is easily cleaned.

Commissioning

The unit is supplied with measuring unit and adjusting damper.

K-factor

THKN	20	25	31	40
K	26,8	49,6	78	100

Description, colours etc.

Semi circular low impulse unit with slitted front and backside net. Connection from above and hidden duct connection. Flexible upper part, adjustable for different room heights. Openable. Circular duct connection with EPDM-rubber seal. Complete included damper and silencer of dacron. Spreader in perforated sheet steel. Measuring tube and point made from PVC. Adjusting cord made of polyester. Cleanable, does not contain filter material. Material: Polman's environmental class **T1 - T4** (see Tech & Advice)
Performance level: Can be obtained in classes **A, B** or **C**.

Packaging materials used are polyethen plastic, cardboard and wood.
All included components are recyclable.
Environmental policy is sent on request.

Specification

Example of unit size 25, manufactured in brushed stainless steel, performance level B, fully welded/silicone jointed accordingly to Tech & Advice.
Polman's supply air unit type **THKN-25** environmental class T3A performance level B.

Accessories

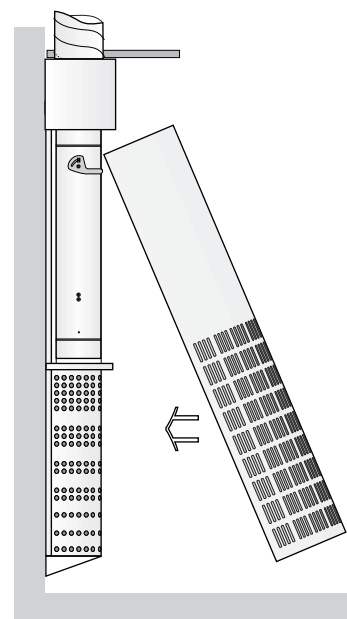
Plinth, state height clearly.

Maintenance

Clean with environmentally appropriate solution.

Assembly etc.

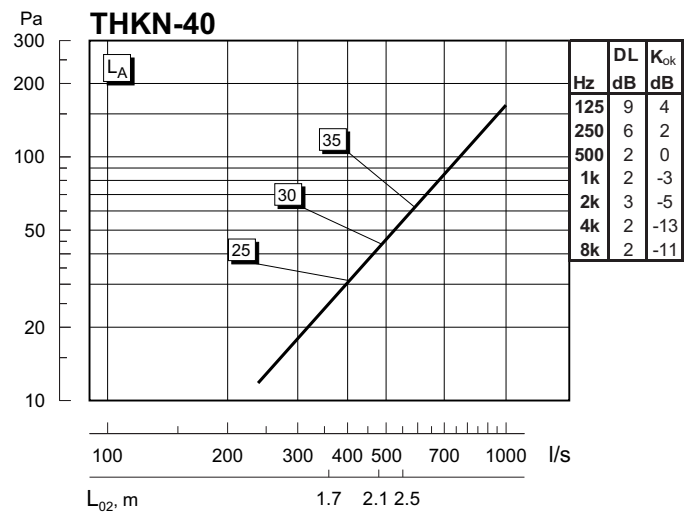
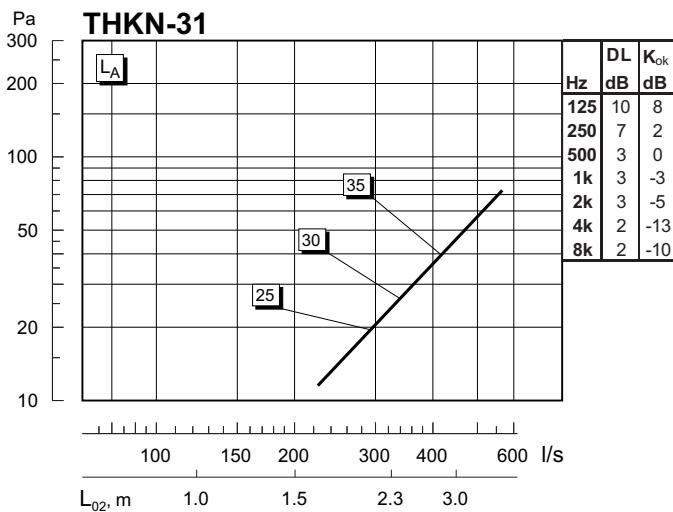
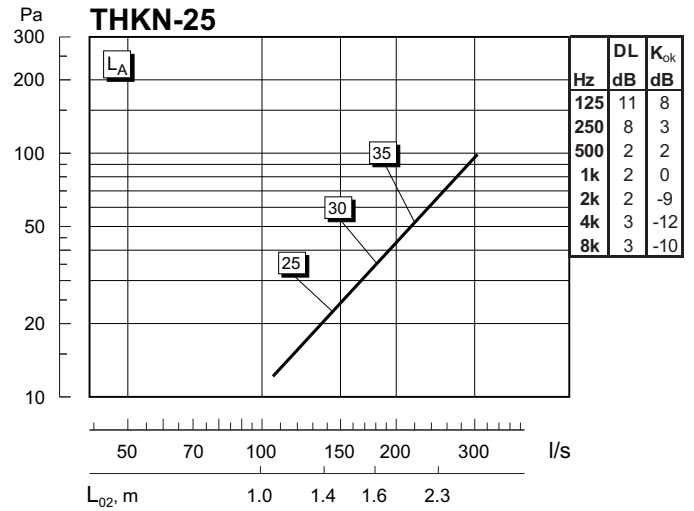
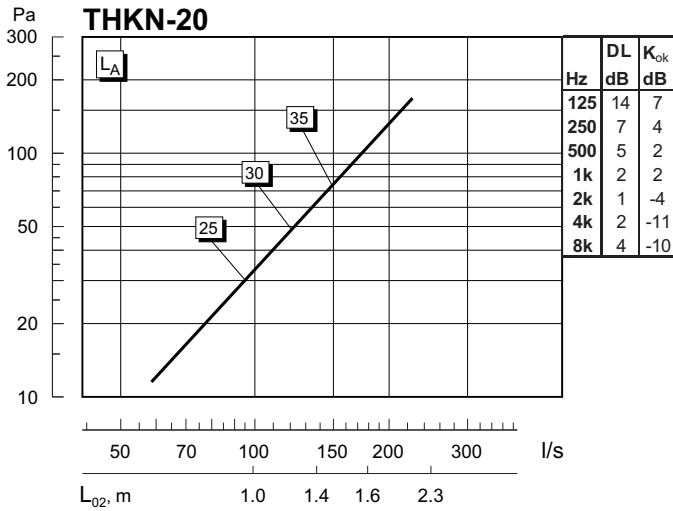
Mounted on wall.
Loosen the front.
Screw the back plate against the wall.
Mount the front. Apply silicone against the wall. (Concerns performance level B and C)



Selection charts

L_{02} = Distance from the unit at a height of 100 mm above floor level where the air velocity has reduced to 0,2 m/s, when the difference between supply air temperature and room temperature at 1,0 m above floor level equals 5°C.

ΔL = Sound attenuation (dB) / frequency, Hz. K_{ok} = Sound power level (dB) / frequency, Hz.



Installation alternatives

